

Biometrics Fingerprint Reader – User Guide

This guide explains how to install and use the **Mantra MFS500 Fingerprint Reader** with **Touch v11.0.039**.

1. Overview

The Mantra MFS500 fingerprint reader allows operators to sign on and clock in using biometric authentication.

Each operator can have **up to two fingerprints** stored.

2. Requirements

- Touch version **11.0.039 or later**
 - Mantra **MFS500 Fingerprint Reader**
 - Mantra **MFS500 drivers** installed on the Touch terminal
-

3. Installing the Fingerprint Reader

1. Connect the **Mantra MFS500** to the Touch terminal using a USB cable.
 2. Install the **Mantra MFS500 driver**.
 3. Restart the terminal after the installation has completed.
-

4. Enabling Biometrics in Touch

Open **touch.ini** and set one or both of the following:

USEBIOMETRICSFORSIGNON=YES

USEBIOMETRICSFORCLOCKIN=YES

Restart Touch after saving the changes.

5. Setting Up Operators

1. Open **Operator Setup**.
2. Enable **Use Biometrics** for any operator who should use fingerprint authentication.

6. Recording Fingerprints

1. Go to **Sales Mode**.
2. Press the button with the command **OPERATORBIOSETUP** (this button requires the Operator function to be enabled).
3. Select the operator's name and press **Finger Print 1** (or **Finger Print 2** if required).
4. Place the finger on the reader and press **Capture Finger Print**.
5. When a good-quality image is displayed, press **Save**.

Tip: Aim for a quality score close to **100**. A score of 97 or above is recommended.

7. Using Biometrics

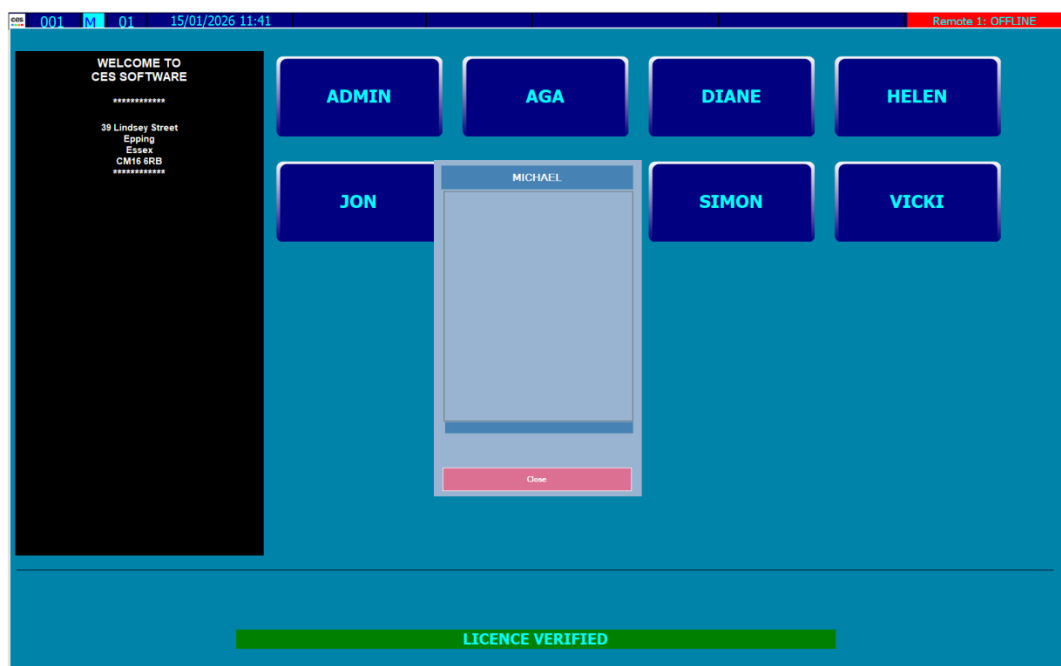
Depending on the **touch.ini** settings:

- Operators will be prompted to scan their fingerprint when **signing on**.
- Operators may be required to scan their fingerprint when **clocking in**.

To authenticate:

1. Press the operator button as normal.
2. The **Biometrics** form will open.
3. Place your finger on the reader.

Note: The Biometrics form will automatically close after **10 seconds** if no fingerprint is detected.



8. Troubleshooting

If fingerprint recognition fails:

- Ensure the **drivers** are installed correctly.
- Check the **touch.ini** biometric settings.
- Re-record the fingerprint if required.